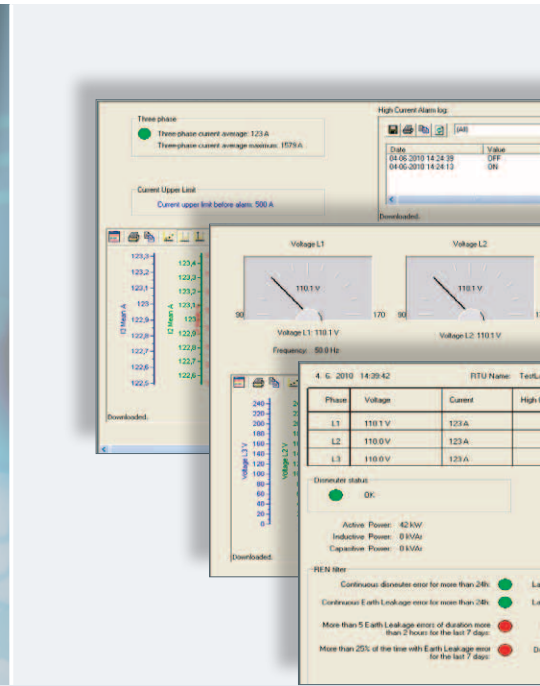


# UtiliKeeper®

Cost-effective remote monitoring and control of substations



## All-in-one box, standard-based solution

UtiliKeeper® is a self-contained system that gives you everything needed to create high-performing, yet economical monitoring of your secondary substations.

UtiliKeeper® is easy to install and operate and it can talk to multiple sensors, store collected data and present them in reports for analysis.

It is the first telecontrol system, which can be managed directly via Internet communications standard without the need for a specialized communications front-end.

## Remote access to all critical substation information

UtiliKeeper® sends data to the network operators in near real time giving them full control of a situation at any point of time. This helps utilities reduce truck rolls and the cost of maintaining the grid by sending the right personnel to the right location in a timely fashion and thus avoiding callbacks for nested outages.

## Advanced alarm functions

Advanced alarm functions present in UtiliKeeper® give early warnings so instant actions can be taken to solve problems before they escalate and become problematic, time-consuming and expensive to fix.



## UtiliKeeper® – the ideal solution for monitoring your secondary substations

### Challenges that utilities face

With rising electricity demand, decentralized power production (rooftop solar panels and household wind mills) and new loads (heat pumps and EVs), utilities, today more than ever, are looking for ways to enable a smarter secure grid that delivers uninterrupted power supply to consumers at reasonable costs. To achieve this goal, they often face various challenges to keep their substations up and running. Problems like power outage, costly unplanned maintenance

and rising operational costs often come in their way which may cascade into series of problems.

Furthermore, these substations are sometimes difficult to access because of their remote locations, snow and inaccessible terrain, so it becomes all the more difficult to reach them in case of failures. With the risks of this nature involved, remote monitoring of the substations has become important.

### UtiliKeeper®: Our solution for you!

UtiliKeeper® from Kamstrup based on the newest technology is an ideal Smart Grid component that gives you everything needed to create high-performance, yet economical monitoring of your substations at low voltages.

It is a cheap and simple to install and operate system designed for harsh operating conditions and high levels of electromagnetic radiations.

#### ✓ **Reduced expenses through round the clock remote monitoring**

UtiliKeeper® sends out instant alarms so problems can be timely addressed, thus increasing the lifetime of assets and reducing the chances of costly repairs. UtiliKeeper® sends the performance information in near real time which helps decreasing response times to identify and fix faults resulting in better and proactive management of substation operations.

#### ✓ **Reduced expenses through Internet technology**

UtiliKeeper® is based on Internet technology. There is no need for specialized communication lines or dedicated SCADA PCs. You can login to UtiliKeeper® using Internet Explorer via IP communication. Alarm handling is based on POP3 mail and SMS.

#### ✓ **Reduced expenses on communication front**

UtiliKeeper® gathers all information within one box thus only one communication line from substation to operations center is sufficient to carry out all information transmission. UtiliKeeper® can even share connection line with a Kamstrup RF Concentrator.

#### ✓ **Reduced expenses via extensive reporting**

UtiliKeeper® sends frequent energy reports informing you about the exact load on the substation, thus allowing you to save money on upgrades. The reports give you early indications of the potential substation being overloaded which may result in tripping and breakdowns.

#### ✓ **Reduced expenses via remote updates**

To ensure your UtiliKeeper® is kept updated and to keep the cost of updating to a minimum, remote installation of software updates is supported.

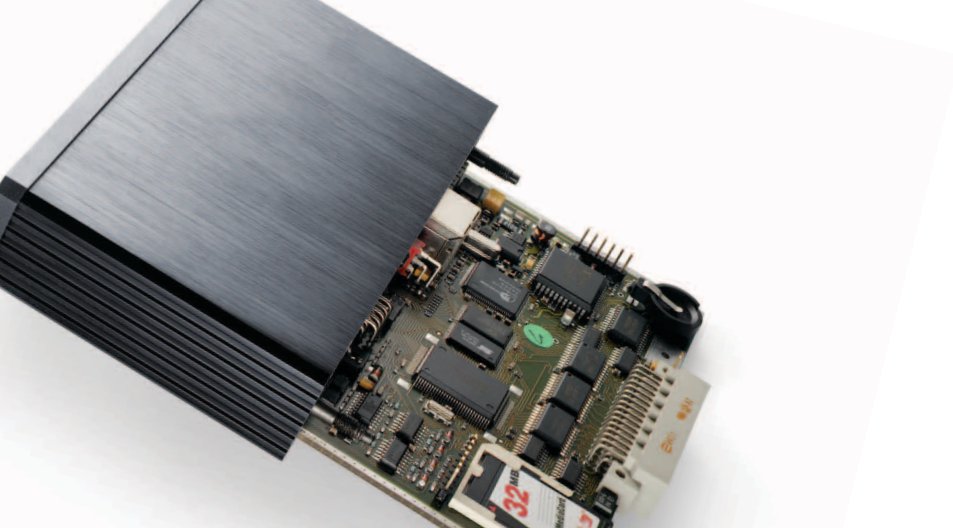




### Easy and seamless integration

The open and interoperable interface of UtiliKeeper® allows for easy integration with any system with which you want to integrate. Use it as stand-alone or integrate it completely into your current Smart Grid environment being either a Meter Data

Management System (e.g. Kamstrup EMS10), a Distribution Management System or a standard SCADA system (via standard protocol IEC 60879-104).



## Technical specifications

|                                   |   |
|-----------------------------------|---|
| Compact industrial design         | ✓ |
| DIN-rail installation             | ✓ |
| 8 digital inputs/outputs          | ✓ |
| 2 digital counter inputs          | ✓ |
| 6 analog inputs (4–20 mA)         | ✓ |
| 2 analog Pt1000 inputs            | ✓ |
| 4 relay outputs                   | ✓ |
| RS232 Modbus slave or master      | ✓ |
| RS485 Modbus slave or master      | ✓ |
| Working temperature: -40 – +65°C  | ✓ |
| Approvals: CE, UL/CSA             | ✓ |
| EMC: EN61326-1, EN61000-4-2,3,4,6 | ✓ |
| MTBF > 400,000 hours              | ✓ |
| 100 Mbit Ethernet                 | ✓ |
| GPRS                              | ✓ |

### Get started with UtiliKeeper®

If you wish to know more about the UtiliKeeper® and how to integrate it with your system, call us today and learn about the high performance and reliability which our customers are used to.

